

# Cafeteria Elisabethenschule

Deutsch Architekten

**Location** Frankfurt/Main, Germany  
**Completion** 2008  
**Client** City of Frankfurt, Stadtschulamt  
**Type of use** Café  
**Gross floor area** 1,000 m<sup>2</sup>  
**Concrete used** Exposed concrete  
**Photos** courtesy of the architects

The cafeteria of the Elisabethen and Fürstenbergerschule is situated underneath a canopy of trees. Seemingly floating, the white concrete cube fits simply and elegantly into the Holzhausenpark. Half of the building mass was positioned underground, allowing the slim structure to distinctly stand out in the park without competing with the nearby school building dating back to the year 1910. The graceful south façade – proportioned according to the golden ratio – is opened up by a 25-meter long glass section with view of an old sycamore tree. The bright yellow linoleum floor and the simple white exposed concrete walls with the fabric-covered ceiling appear bright and friendly. Seating 200, the large room is used as a cafeteria at lunch time and later on for school events.



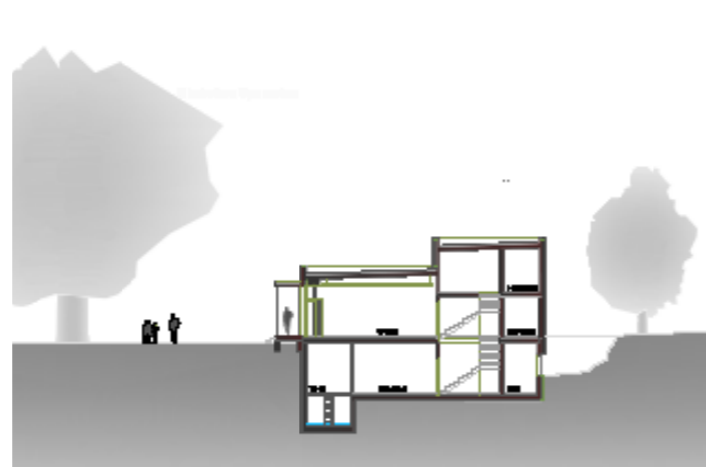
↑ North-west corner  
↓ Entrance and outdoor seating area



↑ Foyer with food counter



↑ Front view  
↓ View from west



↑ Section

